

2025 IMPACT REPORT

LAYERS OF

GRACE



LETTER FROM THE CEO



Dear Neighbors,

GraceWorks turned 30 this year! Like the pearl that traditionally marks this milestone, our journey has been one of adversity, beauty, and strength.

Pearls form in messy places—within the rough, often muddy shells of oysters laying at the bottom of an ocean. Their creation actually begins with hardship.

When a threat invades an oyster, the creature responds by covering it in a miraculous substance we call “mother of pearl.” Layer by layer, the oyster surrounds the threat, transforming it into something precious, beautiful, and incredibly strong.

Over 30 years, GraceWorks has weathered many messy moments: economic downturns, floods, and pandemics to name a few! And yet, like a pearl, it has emerged more beautiful and resilient than ever.

Through GraceWorks, this community has surrounded thousands of neighbors with strength during their messiest seasons. For 30 years, you have provided food, shelter, and

support relief, but more than that, you've shown each neighbor that they are not defined by their messiest moments. They are pearls in the making—something precious and of great worth.

In this year's Impact Report, you'll notice a new section called “Deeper Impact.” This is where we share brand-new research we conducted over the last year. It drills down past the high-level numbers and explores how GraceWorks' programs affect individual neighbors' lives. I encourage you to take a look to see a deeper layer of the impact you're having.

Finally, and most importantly, thank you. Your prayers, service, generosity, and belief in our mission make all the difference. Together, we'll keep uncovering beauty in the mess and help our neighbors shine.

With gratitude,

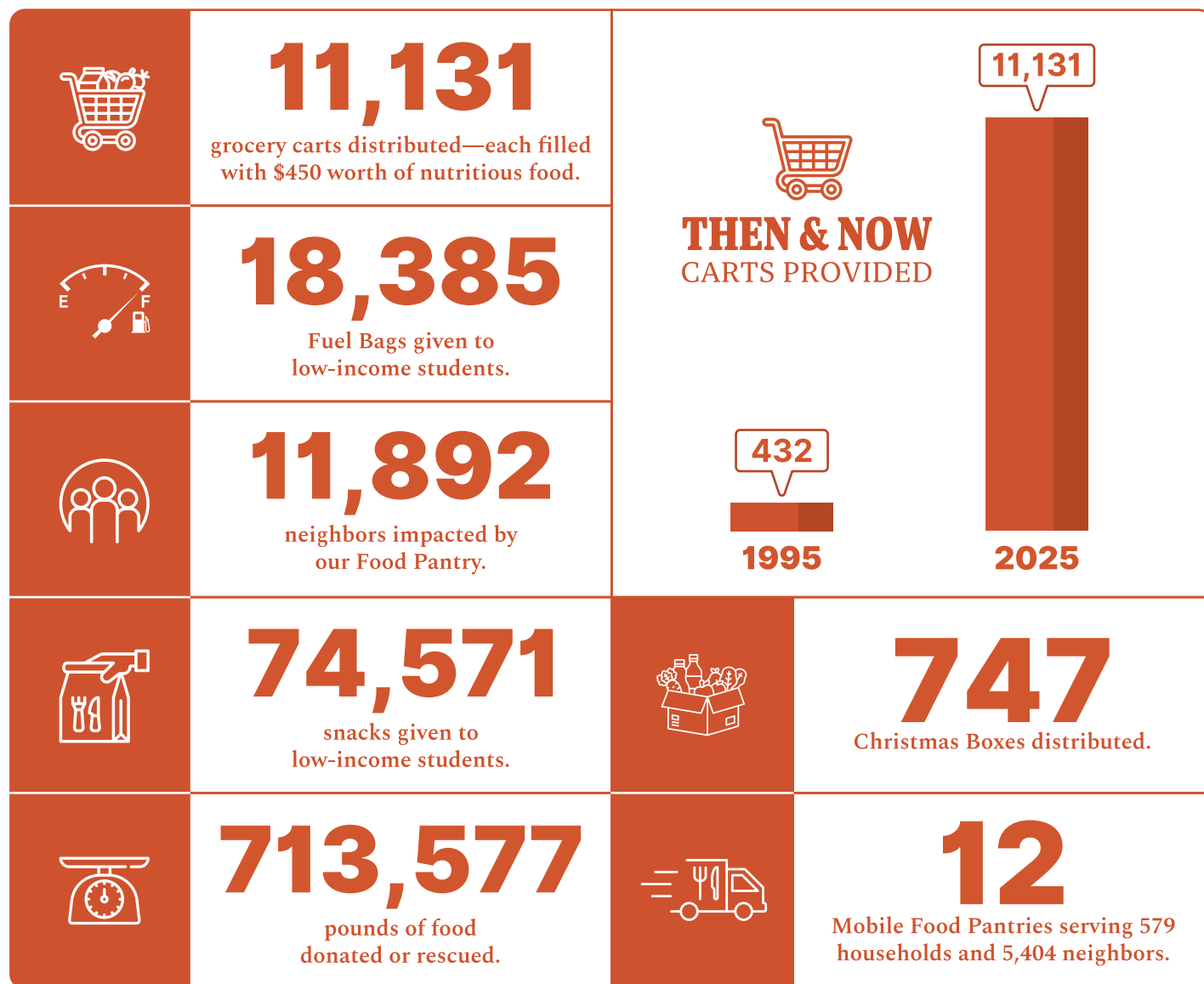
Alicia J.W. Bell

Alicia Bell
Chief Executive Officer
GraceWorks Ministries

*We dedicate these pages to the people of Williamson County. Donors, neighbors, volunteers, and friends like you have made **GraceWorks possible for 30 years.***

The “Deeper Impact” sections in the pages that follow are based on research we conducted in collaboration with Project Impact Reports Middle Tennessee. You can find the full report at GraceWorksTN.org/pi2025

FOOD HIGHLIGHTS

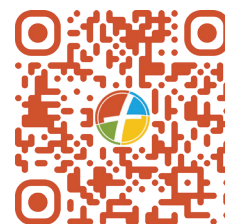


“

I had nothing left to give. And GraceWorks served me....You fed me. You clothed me. You loved me when I felt unlovable.

Carrie

”



Scan to watch Carrie's video.

DEEPER **IMPACT**

FINANCIAL

76% reported an increase in their ability to afford other life necessities (rent, utilities, etc.) as a result of shopping at the Food Pantry.

63% reported greater hope about their financial future as a result of the Food Pantry.

51% reported an increase in their ability to save money for emergencies as a result of the Food Pantry.

PHYSICAL & MENTAL

78% of neighbors noticed physical health improvements as a direct result of shopping at the Food Pantry.

86% are now more likely to include healthy foods in their family's daily meals.

76% of neighbors experienced very little or no anxiety at all about food after using the Food Pantry, compared to 35% before using the Pantry.

UNEXPECTED FINDINGS

Access to our Food Pantry increases social connections.

Food insecurity leads to social isolation, but access to our Food Pantry helps neighbors build and nurture relationships. Neighbors told us that after coming to our Food Pantry, they felt more confident saying yes to dinner invitations because they could contribute food. They also began inviting friends over because they could now offer something to eat.

Access to our Food Pantry fosters family bonding.

Neighbors said that cooking meals with groceries from our Food Pantry has become a fun and anticipated bonding experience with their children. Grandparents reported that they could now offer a meal or snack to their grandkids when they visit. And because food is no longer a constant worry, parents report that they have the mental capacity to be more present with their children.

WHAT NEIGHBORS ARE SAYING

The Food Pantry...

**Reduces
my anxiety.**

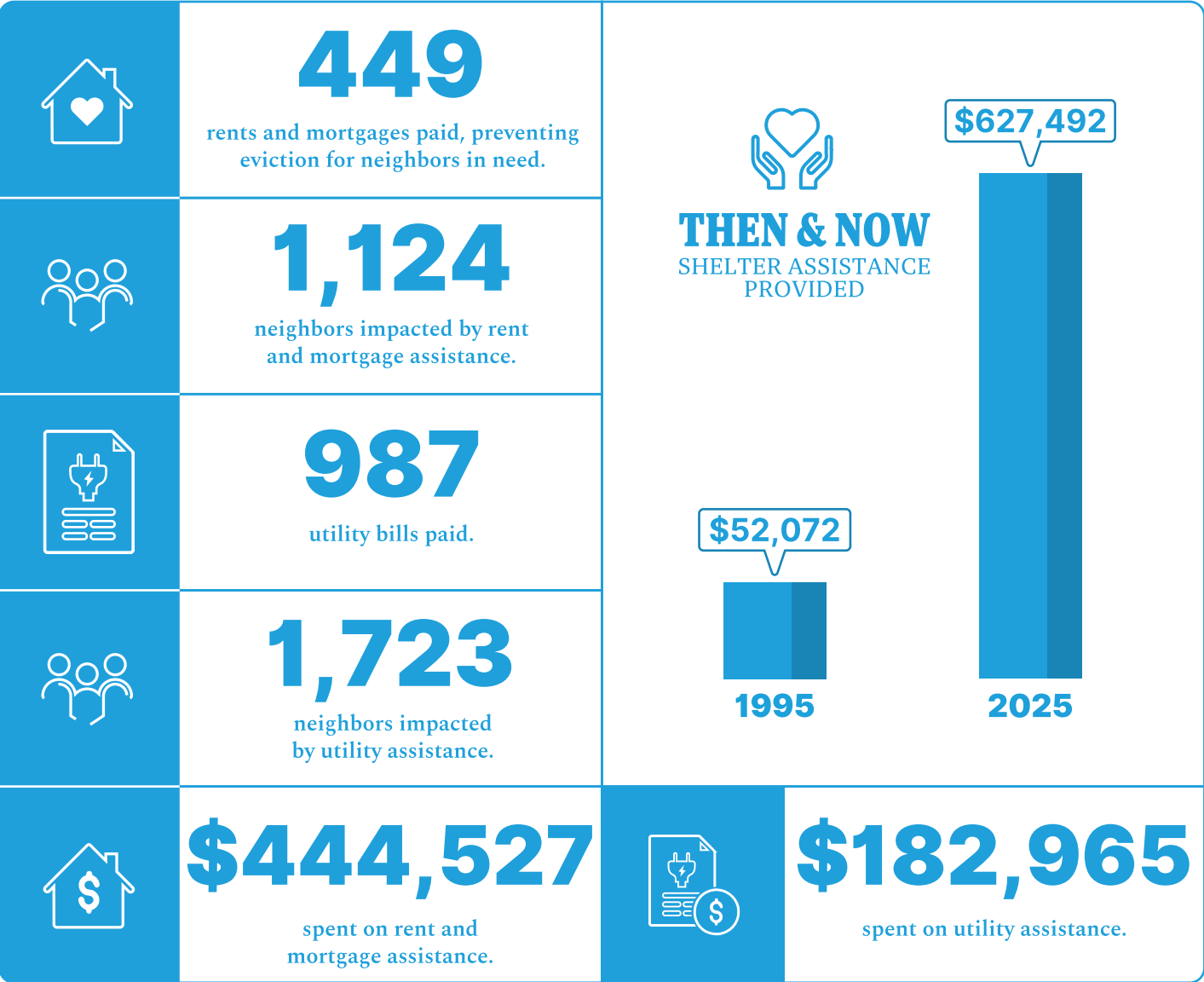
**Provides
mental and
emotional
relief.**

**Allows me to
dream and
envision a
brighter future.**

**Helps
me sleep
better.**



SHELTER HIGHLIGHTS



“

You don't know that you're probably sitting or standing beside someone who GraceWorks has touched....God is never not present at GraceWorks.

Mia

”



Scan to watch
Mia's video.

DEEPER **IMPACT**

FINANCIAL

77% of neighbors indicated that they had substantial gains in their ability to provide for their family because of receiving shelter assistance.

63% reported substantial gains in their ability to afford other life necessities (food, gas, insurance, etc.).

75% of neighbors say they are much more hopeful about their financial future after receiving shelter assistance.

MENTAL & EMOTIONAL

73% of neighbors reported a significant increase in their self-confidence and pride in providing basic needs for themselves and their families because of receiving shelter assistance.

75% felt a significant connection to the community as a result of receiving shelter assistance.

79% of neighbors indicated that receiving shelter assistance changed the way they view their situation.

UNEXPECTED FINDINGS

GraceWorks' shelter assistance helps an underserved segment of our community. Middle-class, employed neighbors in Williamson County find themselves in a catch-22 if they need to apply for assistance: Their income is too high to qualify for help, but it's not high enough to carry them through life-altering events. When GraceWorks assesses an assistance request, we evaluate many factors beyond income, allowing middle-income neighbors who are facing a season of struggle to get the help they would be immediately denied at other organizations.

Shelter assistance preserves community connections.

By helping families remain in their homes, neighborhoods, and schools, GraceWorks prevents the disruption and emotional strain of frequent relocation. Neighbors said that receiving shelter assistance allowed their children to build and maintain life-long friendships.

WHAT NEIGHBORS ARE SAYING

Shelter Assistance...

Allowed me to
sleep at night.

Boosted
my
confidence.

Relieved severe
levels of
stress & anxiety.

Made me
feel like I
am no longer
alone.



SUPPORT HIGHLIGHTS



9,318

Christmas gifts provided through the Manger event.



1,153

children given the gift of Christmas through the Manger. (Includes three large gifts, one small gift, one book, and one stocking stuffer per child.)



\$37,723

worth of Thrift Store vouchers given to 305 families.



16

mothers in need experienced relief through Our Little Angels program (Supplies include car seats, pack-and-plays, diapers, and more.)

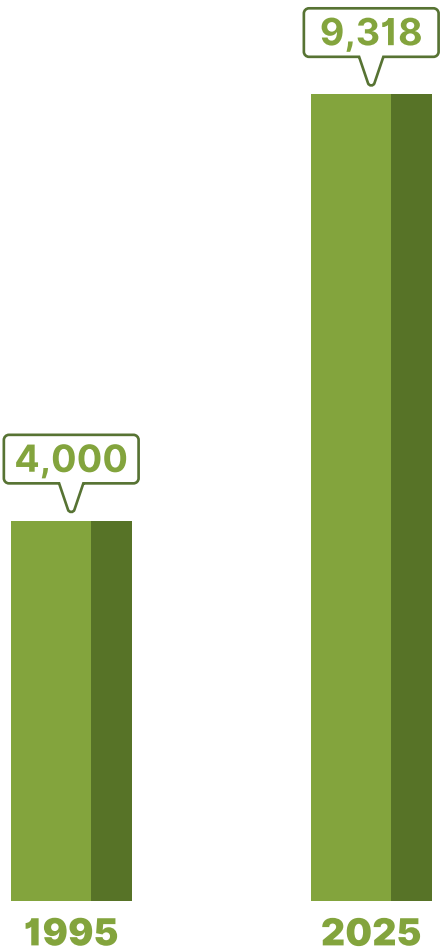


28

counseling sessions provided.



THEN & NOW THE MANGER GIFTS PROVIDED



JENNIFER'S STORY



Jennifer spent years in a relationship where she endured domestic violence. Her life was filled with pain and abuse, but because she feared for her and her son's lives, she felt powerless to change it. At times, the feeling that things would never get better led her to such deep depression that she couldn't get out of bed.

When Jennifer came to GraceWorks, she had escaped the abusive relationship, but she hadn't healed. Neither had her son. So when she told us her story and asked us for help with her rent and utility bills, we offered something she hadn't asked for: counseling.

Jennifer described her time in counseling as life-changing. **"Graceworks covered the costs of counseling sessions for me and my son at the Refuge Center," she said, "I believe this support was more valuable than assistance with my rent, as it provided me with the tools and the hope I needed."**

This is the kind of deeper impact our Support team provides. They take the time to discern not only what will help a Neighbor out of crisis, but also what will help them move forward into healing, success, and a brighter future.

Name changed to protect identity.



YOUR SUPPORT SERVED 15,593 NEIGHBORS

VOLUNTEERS

12,694

People Volunteered

363

Volunteers Served Each Week

44,370

Total Hours Volunteered

THRIFT STORE

\$1.89 M

Thrift Store Revenue

71,517

Thrift Store Transactions

2,685

New Thrift Store Shoppers

DONATIONS

2,300

Monetary Donations

737

First-Time Donors

STAFF MEMBERS

78

Staff Members

19

New Hires

A LOOK AT THE NUMBERS



In-Kind	55%	\$7,543,391
Store	14%	\$1,953,696
Individuals	20%	\$2,727,986
Grants	3%	\$364,660
Churches	2%	\$327,827
Businesses	4%	\$615,578
Other	2%	\$292,827
TOTAL	100%	\$13,825,965



Programs	95%	\$11,991,244
Fundraising	1%	\$112,931
Admin	4%	\$534,080
TOTAL	100%	\$12,638,255

Please note that these financials are preliminary. The final audited financials will be available on our website upon completion of the audit.

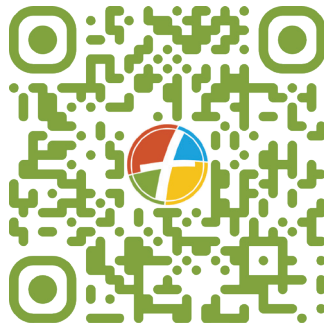
HELP US CONTINUE **THE STORY...**

DONATE

Clothing, Household
Goods & Furniture



Your Time



Money



Shop Like Your Neighbors Depend on It . . . Because They Do!

Revenue from our Thrift Store helps neighbors in need. So when you shop at our award-winning store, you're impacting lives in your local community.



FURNITURE | HOME DECOR | JEWELRY | ANTIQUES | CLOTHING | BOOKS | ELECTRONICS | ART

104 Southeast Parkway, Franklin, TN 37064

Store: Monday - Saturday 9 a.m. to 6 p.m.

Donations: Monday - Saturday 9 a.m. to 5 p.m.



Neighbors serving neighbors, by the power of God's grace.
Since 1995, we have provided **Food, Shelter, and Support** for our neighbors in need.

f @GraceWorksMinistries **@** @GraceWorksTN **▶** @GraceWorksMinistries **in** @GraceWorksTN

BOARD MEMBERS

Andy Moriarty
Chairman of the Board

Bill Wright
Vice Chair, IT Committee Chair

David Cripe
New Home Committee Chair

Shandy Husmann
Treasurer, Finance Committee Chair

Chastity Fox
Marketing Committee Chair

Courtney Keenan
Governance Committee Chair

Steve Hayes
HR Committee Chair

Susan Hosbach
Development Committee Chair

Alicia Bell
Non-voting, Chief Executive Officer

Joe Castrorao
Secretary

Bart Lane

Brian Shun

Cindy Pramuk

Dwayne West

Rusty Wright

Tim Cochran

Tony Dunning

Tracey Power

Tres Scheibe